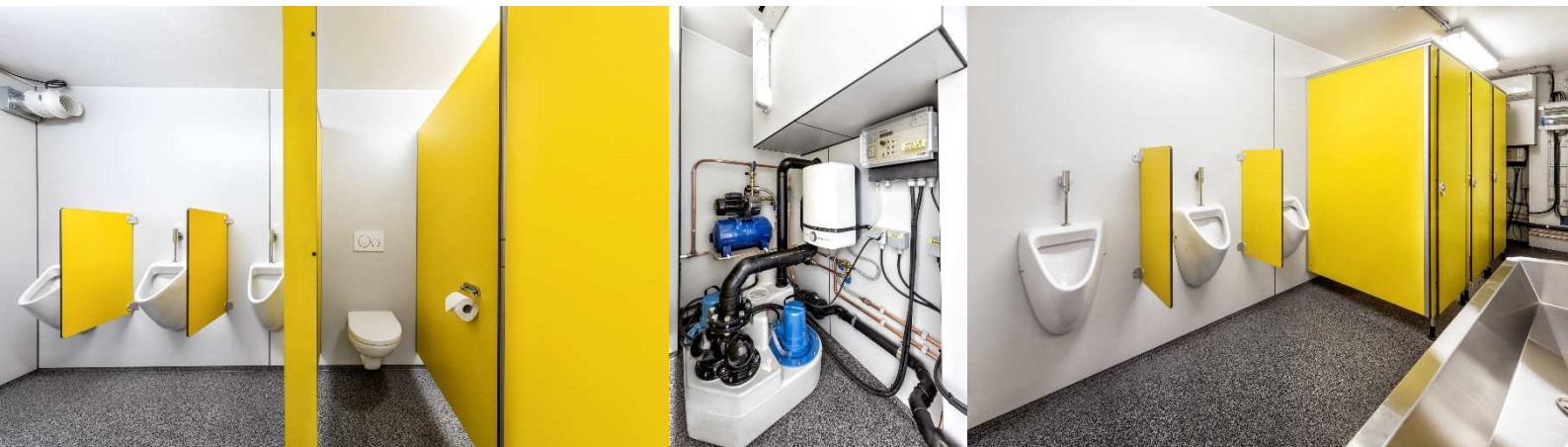




H2M lightweight modules meet the demand from the market for lightweight accommodation and workspace modules. Designed with highest standards of exterior and interior facilities, they provide maximum comfort and security in challenging offshore environments.





20ft. sanitary module, standard provided with;
15ltr hot water boiler, sewage pump, fresh water booster pump, sink, 3 toilets and 3 urinals.

Length	6.058 m
Width	2.438 m
Height	2.591 m
Weight	5.000 kg Approx.
Quality Standards	EN 12079, DNV 2.7-1
Operating Environment	Designed for -10 C to +30 C
Design Approval	Lloyds Register Energy
Power voltage	400V, 50Hz, 3ph+N
HVAC	Integrated split system, heater and ventilation
Lifting Slings	Certified wire rope lifting slings supplied as standard
External color	Yellow with H2m trademarks